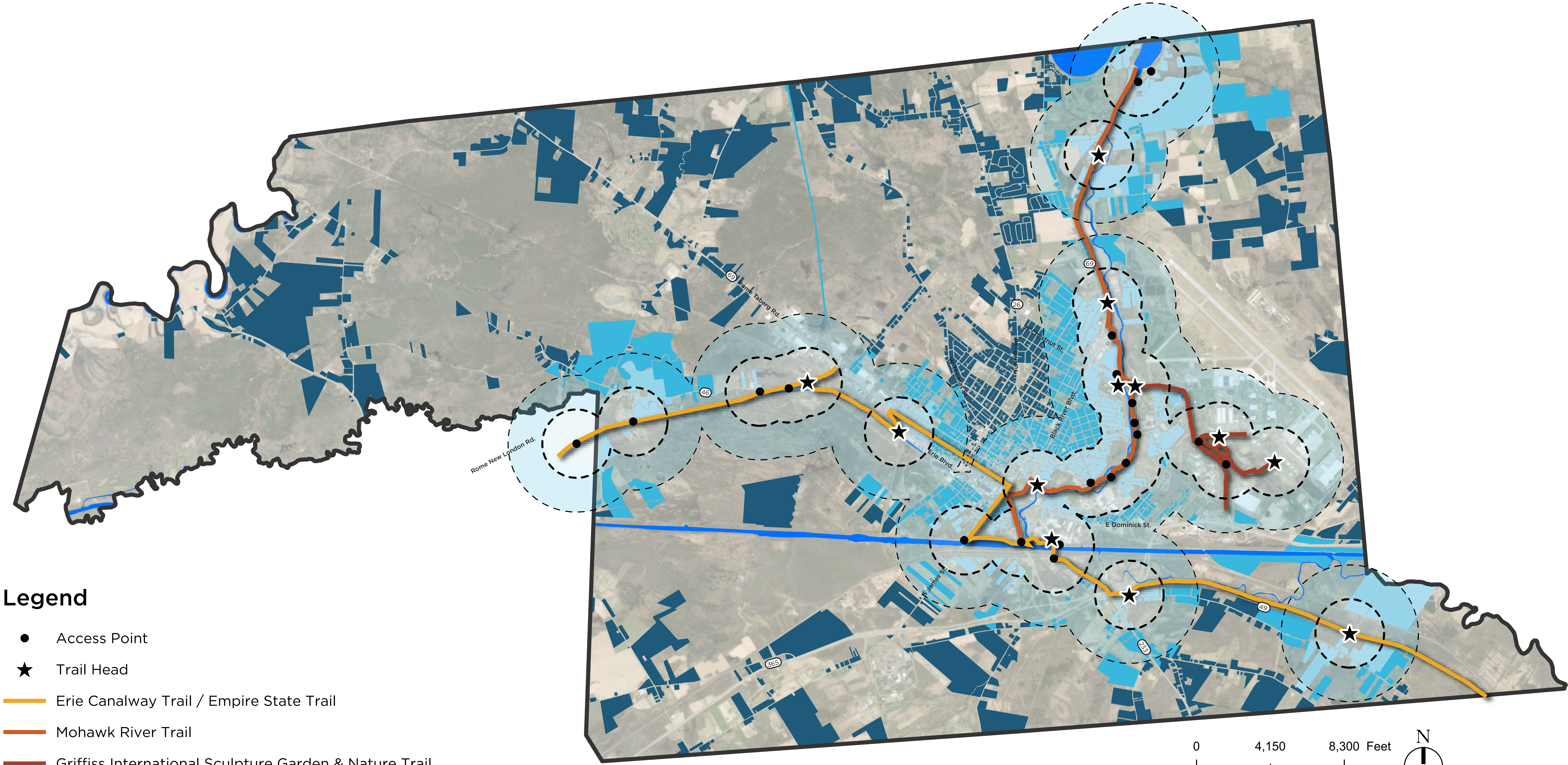


# Rome Parks, Open Space, and Trails (POST) Master Plan

## Gap Analysis - Trails



### Legend

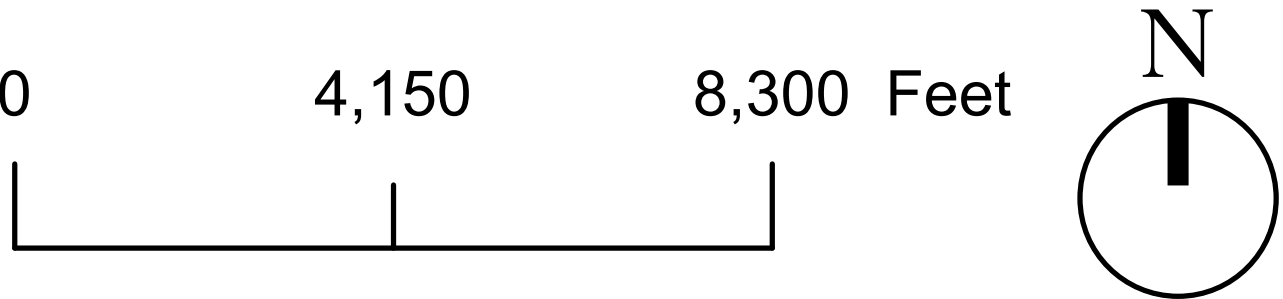
- Access Point
- ★ Trail Head
- Erie Canalway Trail / Empire State Trail
- Mohawk River Trail
- Griffiss International Sculpture Garden & Nature Trail
- ▭ City of Rome
- Waterbody

### Residential Parcels

- Up to 1/2 Mile from Trail Head/Access Point
- Up to 1 Mile From Trail Head/Access Point
- Greater than 1 Mile From Trail Head/Access Point

### Distance Buffers from Trail Heads

- 1 Mile
- 1/2 Mile



New York State, Earthstar Geographics, City of Rome, NY